

2025 Newly Launched Products



Shenzhen ATESS Power Technology co.,. ltd

 Speaker: Rubio Chen



CONTENTS



01 **SMC200/ SMC200HV**

PCS250/350S

02

03 **PCS1000/1200/1500HV**

HPS100/150HV & PV-CB8HV

04

05 **RTF600A**

**Multiple Upgrades for
Transformless HPS-TL**

06

07 **EnerCon**

Monitoring System Upgrades

08



01 | SMC200/SMC200HV Smart MPPT Controller



Combination of the PV Combiner Box and MPPT Controller

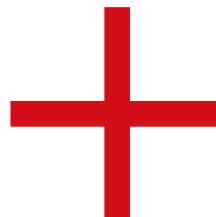


8 ways PV strings
Maximum 160A PV strings current

8 ways MPPT input
Maximum 200kW for single unit

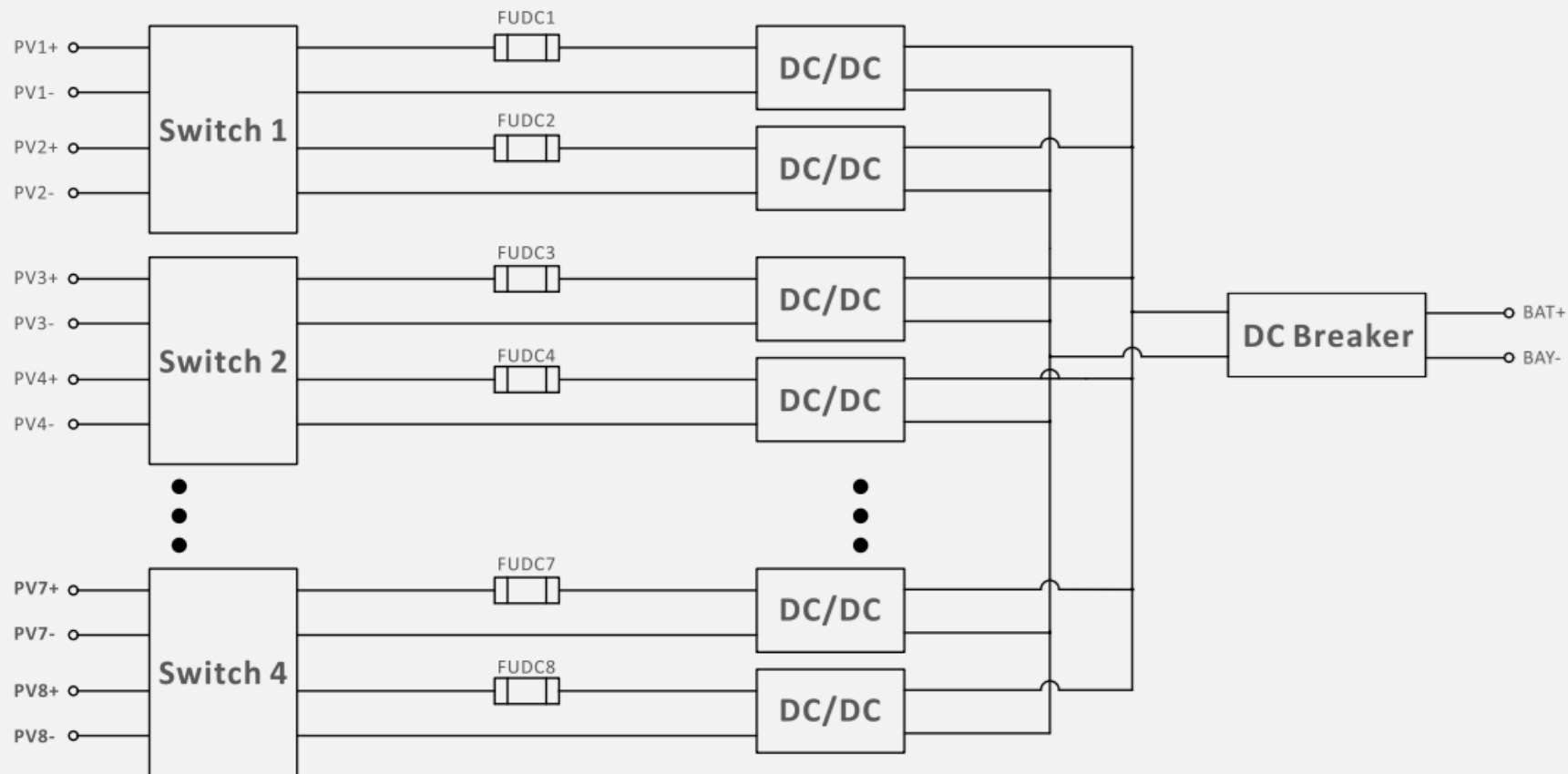


PV Combiner Box



MPPT Controller

SMC200 Block Diagram



Suitable for High Voltage PV Modules



Parameters	SMC200
MPPT Voltage Range(V)	900-1500
Full Load MPPT Voltage Range(V)	1250-1500



Parameters Comparison

Products	Parameters	Range(V)							
		200	400	600	800	1000	1200	1400	1600
PBD250	MPPT Voltage								
	Full Load MPPT Voltage								
SMC200	MPPT Voltage								
	Full Load MPPT Voltage								

High Ingress Protection Level and Compact Design



Size: 780/770/210mm & 65kg

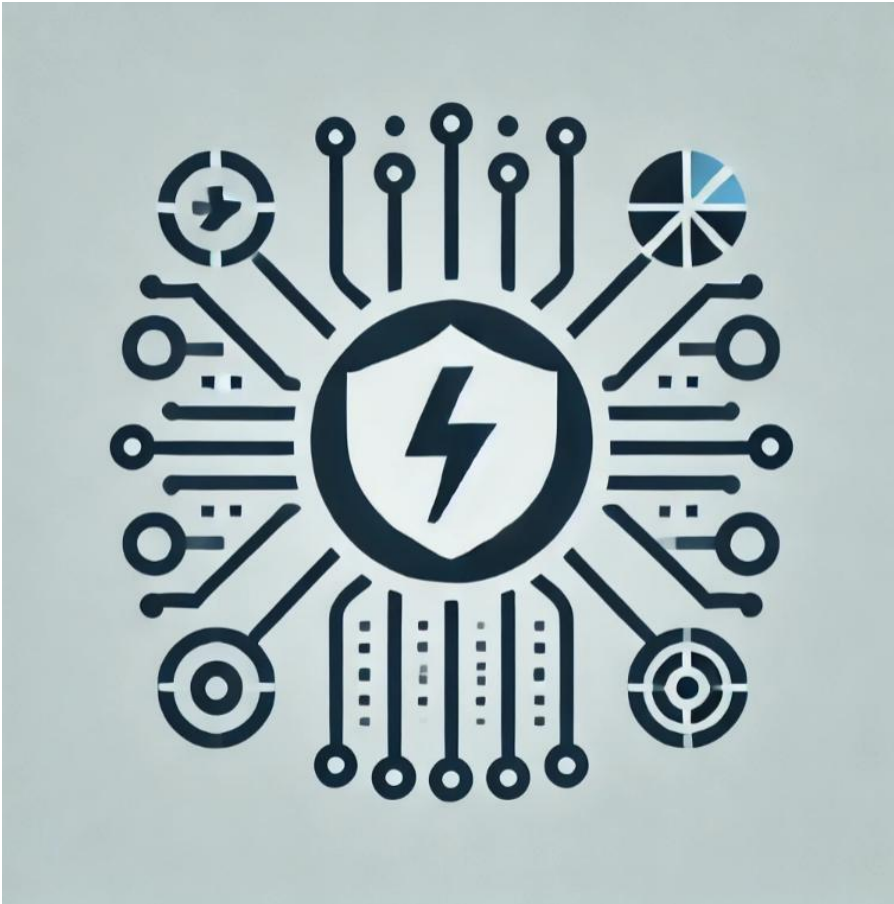
IP65

- Excellent in outdoor waterproof
- Smart design in size for easy installation
- Cost effective for solar charging controller
- Save space for container solution



Parameters Comparison

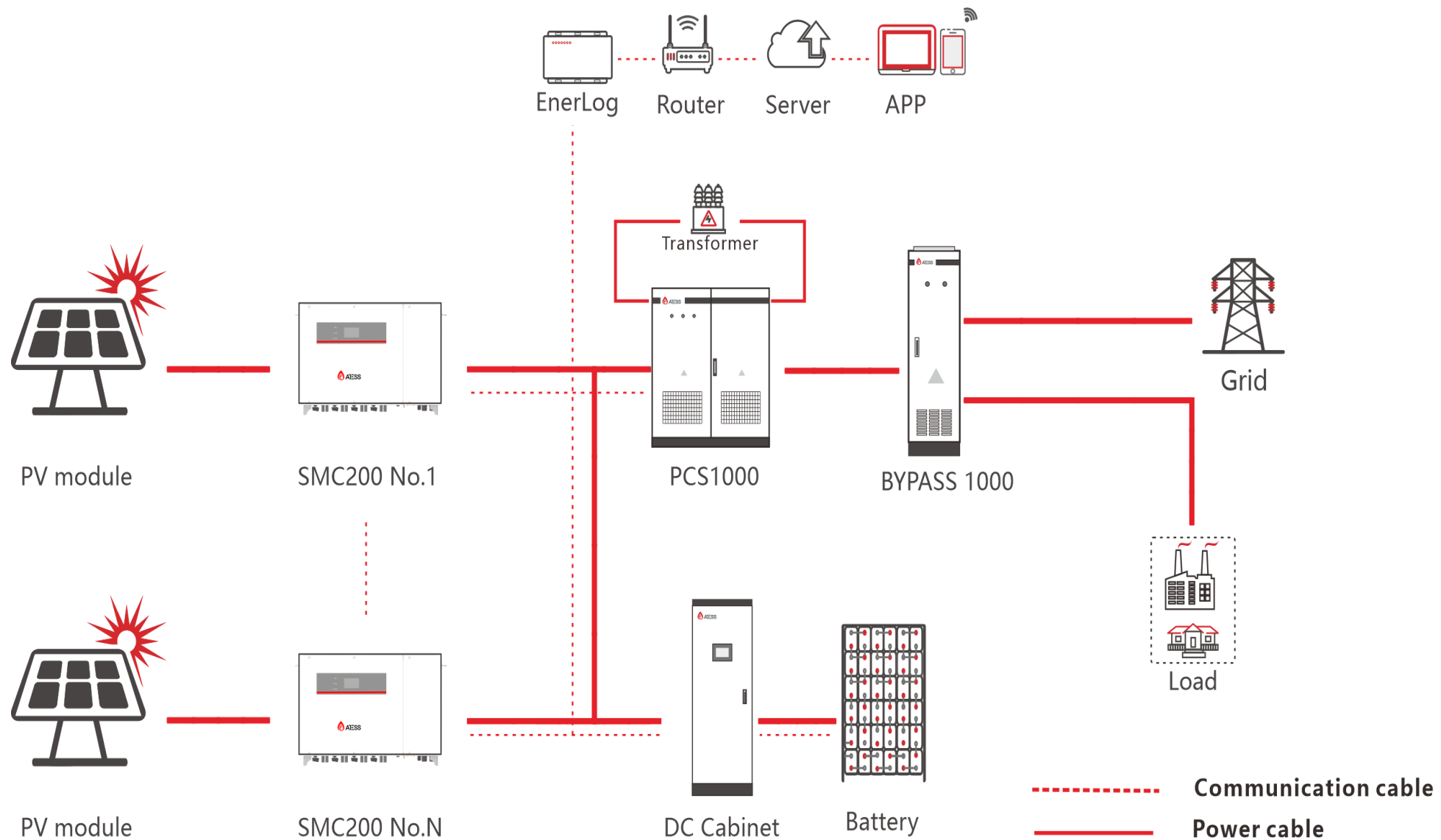
Products	Protection level	Size (W/H/D)	Weight
PBD250	IP20	800/1900/650 mm	289kg
SMC200	IP65	780/770/210 mm	65kg



Features

- ✓ **Input and Output Over/Under Voltage Protection**
- ✓ **Input and Output Overcurrent Protection**
- ✓ **Short Circuit Protection**
- ✓ **Overheat Protection**
- ✓ **Lightning Protection**
- ✓ **DC Circuit Breaker**
- ✓ **Emergency Shutdown Protection**

Multiple Units Parallelable



SMC200/200HV matching with different PCS



Wide suitability with PCS

Match with all PCS series of ATESS



Appropriate PCS

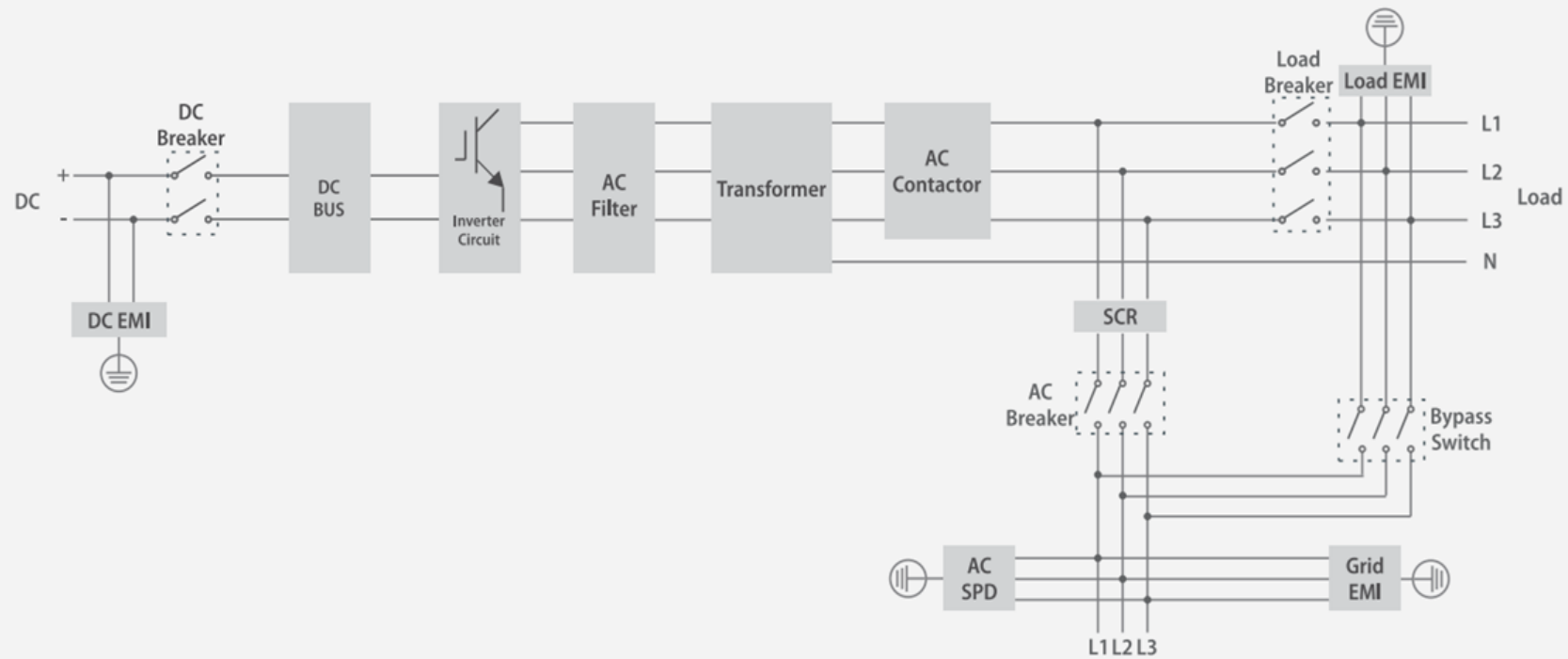
Products	Range of ATESS PCS					
	PCS100~PCS630		PCS1000	PCS250S/PCS350S		PCS1000HV~PCS1500HV
SMC200						
SMC200HV						

Parameters	Values
Battery voltage range	900V-1500V
Full load battery voltage range	1250V-1500V
Rated PV current	160A(20Ax8)
Output voltage range	600V-900V (670V-900Vfull load)
Battery type	Lead-acid or lithium-ion
Maximum charging current	300A
Max efficiency	99%
Dimension(W/H/D)	780*770*210mm
Weight	65KG
Cooling method	Intelligent fan cooling



02 | PCS250S/350S PCS with Inbuilt STS

PCS250S/350S Block Diagram



Intergrated PCS and Bypass



Two in One design

- Build-in STS
- Combined one more AC input & output
- Cost effective for your BESS
- Save space for container solution



Parameters Comparison

Products	Built in			
	SCR	Grid Bypass Switch	AC input&output(Grid & Load)	Size
PCS250	No	No	Shared	1600/2080/850mm
Bypass250	Yes	Yes	Separated	700/1800/500mm
PCS250S	Yes	Yes	Separated	1400/1900/850mm
PCS350S	Yes	Yes	Separated	1400/1900/850mm

Higher Battery Voltage Range



Higher Battery Voltage

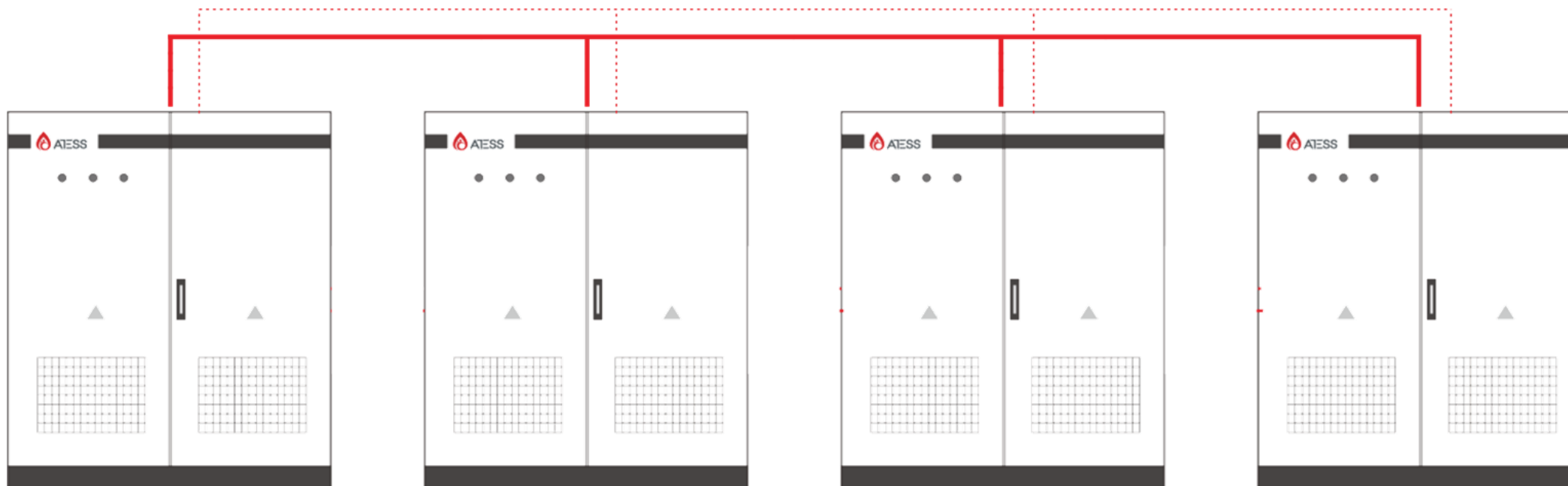
Battery Voltage Range(V)	600-900
--------------------------	---------



Parameters Comparison

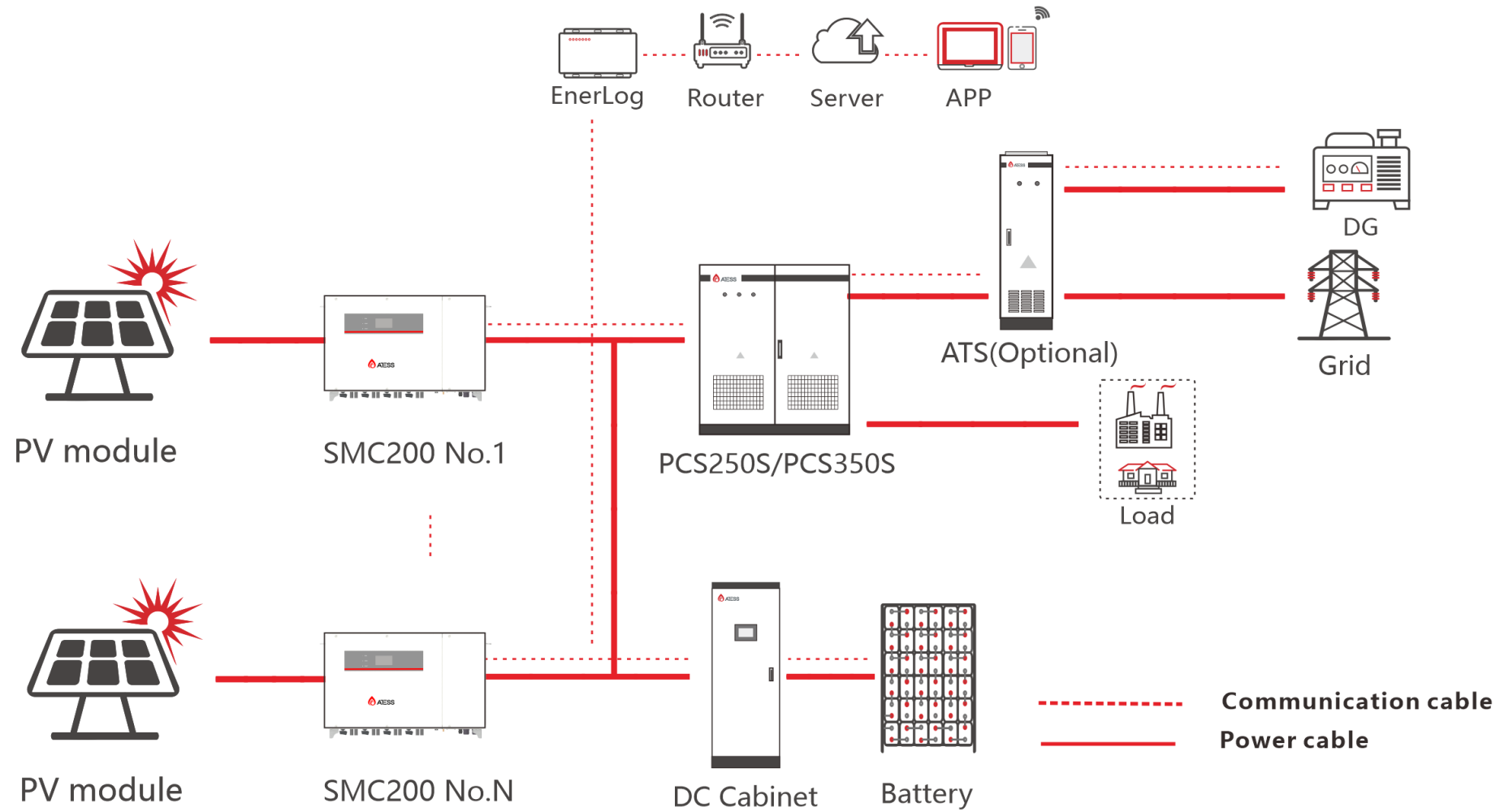
Products	Parameters	Range(V)							
		200	400	600	800	1000	1200	1400	1600
PCS250+Bypass250	Battery Voltage Range								
PCS250S/PCS350S									

Up to 8 Units in Parallel



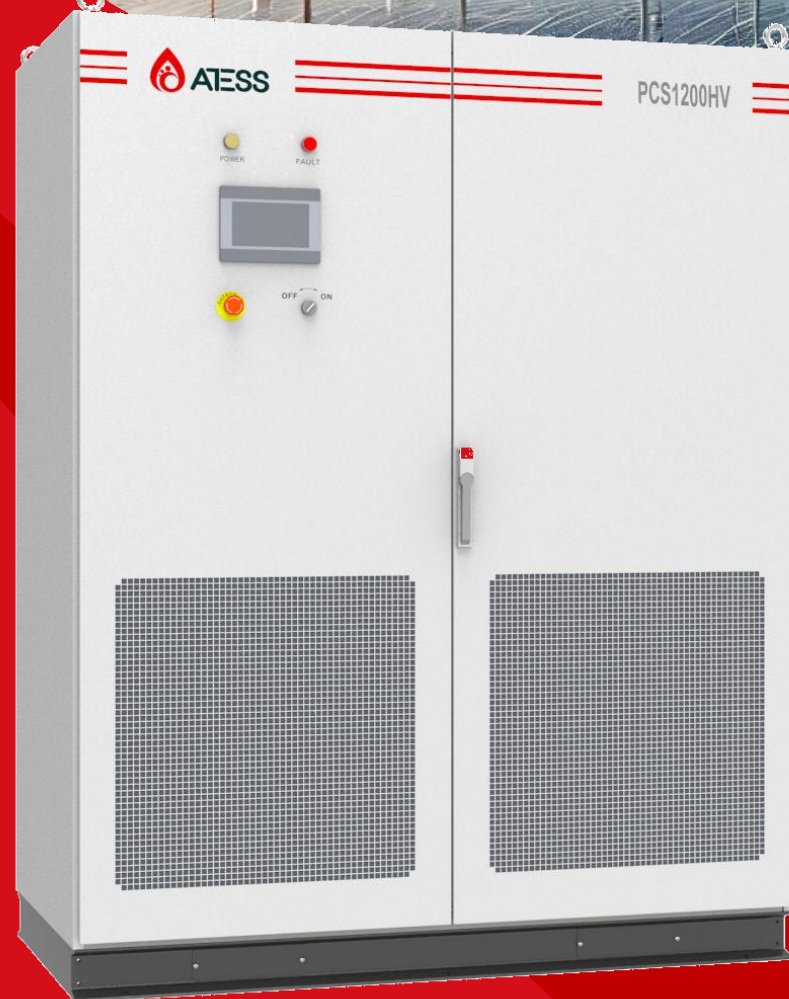
Support max. 8 units PCS350S working in off-grid parallel status to get 2.8 MW BESS

System Diagram



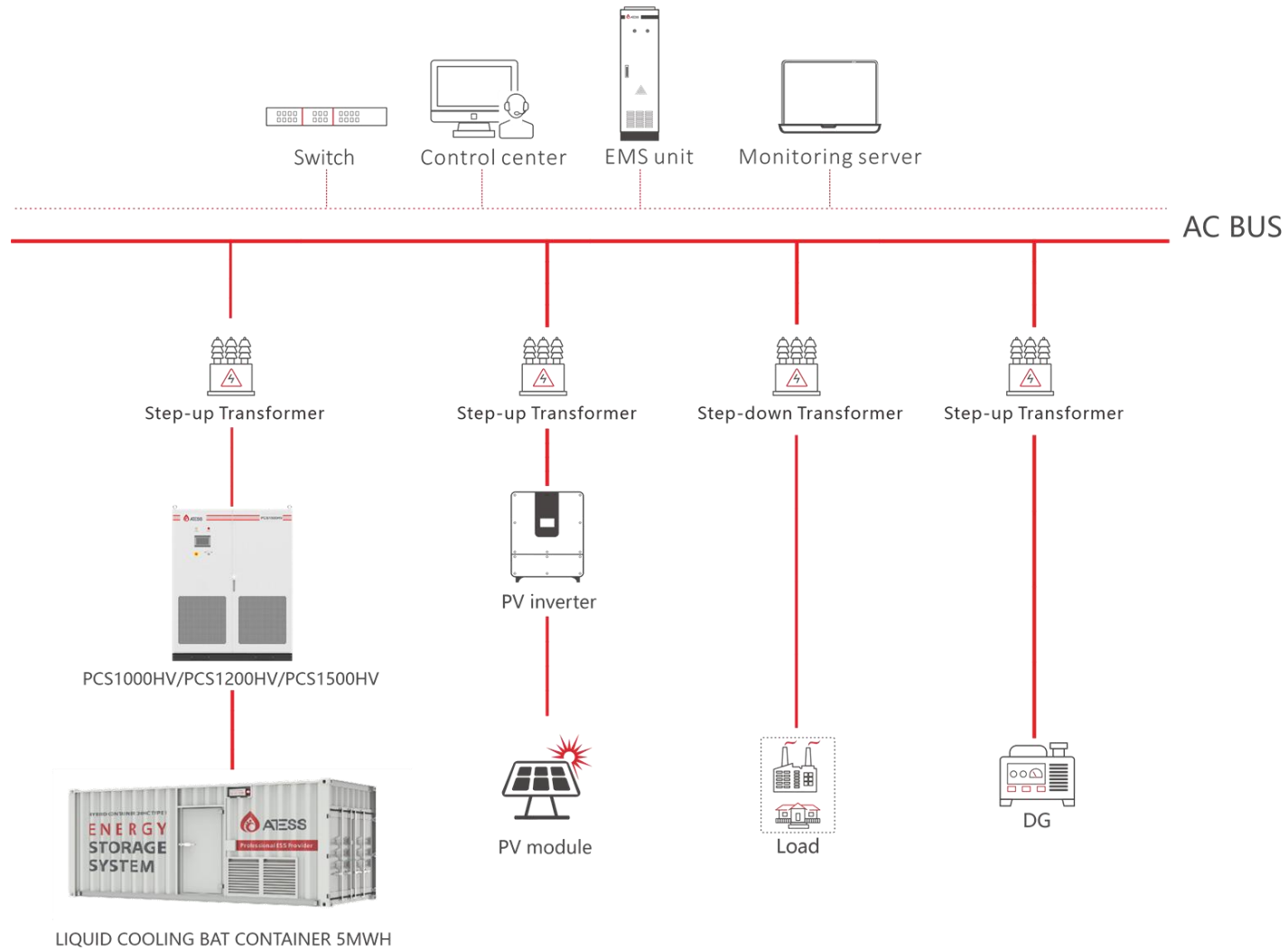
With SMC200 working together to get a larger size 350kW “single-HPS” system

Parameters	PCS250S	PCS350S
Apparent power	250KVA	350KVA
Rated power	250KW	350KW
Rated voltage	400V	400V
Rated current	361A	505A
Voltage range	600-900V	600-900V
Dimension(W/H/D)	1400/1900/850mm	1400/1900/850mm
Weight	1460kg	1524kg
Communication	RS485/CAN	RS485/CAN

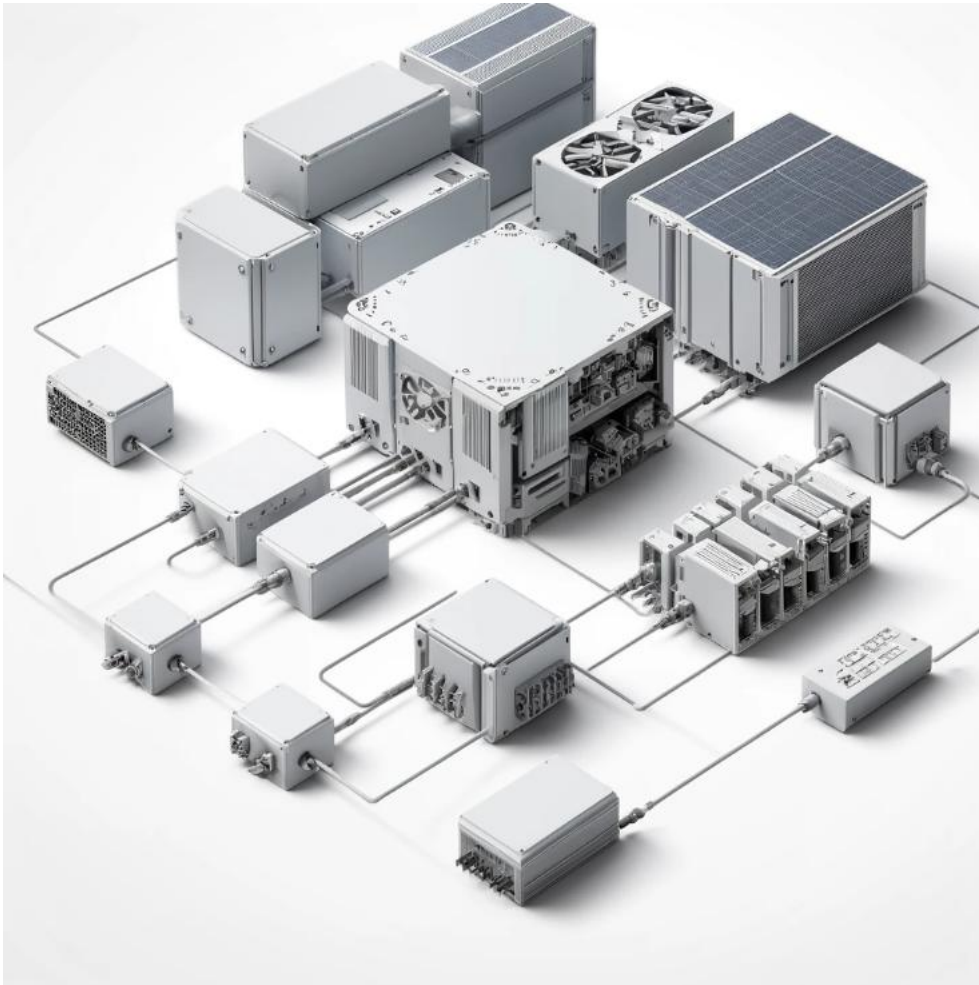


03 | PCS1000/1200/1500HV PCS High Voltage

Large Scale of On/Off-grid Solutions



Utility-scale Solution



Features

- ✓ **1000/1200/1500kW output power for single unit**
- ✓ **Flexible configuration**
- ✓ **Inbuilt modular design**
- ✓ **Paralleled up to 6 units(Off-grid)**
- ✓ **Maximum output power reaches to 9MW**

Higher Battery Voltage Range--- PCS1000/1200/1500HV



Higher Battery Voltage

Battery Voltage Range(V)

900-1500



Parameters Comparison

Products	Parameters	Range(V)						
		400	600	800	1000	1200	1400	1600
PCS630	Battery Voltage Range							
PCS1000								
PCS1000HV								
PCS1200HV								
PCS1500HV								



ATESS Liquid Cooling Battery Y104R04C12-5.015MWh



Parameters	Y104R04C12-5.015MWh	Remark
Configuration	416S12P	
Rated Energy	5015.9kWh	90%DOD, 0.5P
Rated voltage	1331.2V	
Operating Voltage Range	1040~1500V	For cell 2.5V~3.65V
Dimension	6058mm×2438mm×2896mm	L×W×H , 20HQ
Mass	~44000kg	
Operating ambient temp.	-30~60℃	
IP level of cabin	Bat. Room IP55 Electric room IP55 Chiller controller module IP55	
Efficiency	≥93.8%@0.5P ≥95.2%@0.25P	

ATESS HV Air-Cooling 1C Battery BR -1C



Parameters	BRxxxRPB-1C	Remark
Configuration	26S1P	
Rated Energy	372.73kWh	90%DOD, 1C
Rated voltage	1331.2V	
Operating Voltage Range	1040~1500V	For cell 2.5V~3.65V
Operating ambient temp.	-30~60°C	
IP level of cabin	IP20	



Wide suitability with PCS

Match with all PCS series of ATESS



Appropriate Battery

Products	Range of ATESS Battery	
	Liquid Cooling Battery 0.5C	Air Cooling Battery 1C (1331V)
PCS1000HV PCS1200HV PCS1500HV	Y104R04C12-5.015MWh	26S1P with 14.336kWh 51.2V 280ah Battery Module



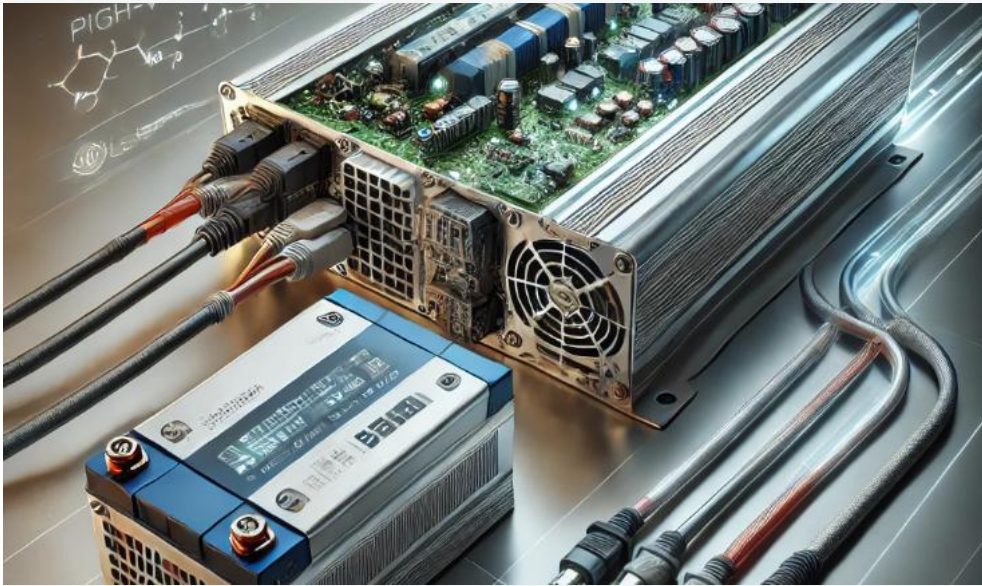
Advanced three-level technology

Maximum efficiency 98.5%

Effective forced air cooling

No derating up to 45 °C

Support High Battery Voltage



HVRT

LVRT

VSG Function Available

Virtual Synchronous Generator

Parameters	PCS1000HV	PCS1200HV	PCS1500HV
Apparent power	1000KVA	1200KVA	1500KVA
Rated power	1000KW	1200KW	1500KW
Rated voltage	540V	550V	690V
Rated current	1443A	1260A	1260A
BAT Voltage range	900-1500V	900-1500V	1000-1500V
Dimension(W/H/D)	1510/1900/850mm	1510/1900/850mm	1510/1900/850mm
Max. efficiency	98.5%	98.5%	98.5%
Communication	RS485/CAN	RS485/CAN	RS485/CAN



04 | HPS100HV/150HV HPS High Voltage

Upgraded HV PV and Battery for HPS100/150HV



Mppt Voltage: 900-1300V
Number of MPPTs: 2

Battery Voltage:
600-900V



Flexible and high efficient in PV and battery deployment



Parameters Comparison

Products	Number of MPPT.	Parameters	Range(V)						
			400	600	800	1000	1200	1400	1600
HPS100/HPS150	1	MPPT Voltage							
HPS100/HPS150HV	2								
HPS100/HPS150		Battery Voltage							
HPS100/HPS150HV									

Unchanged Features





600-900V

Expand battery configuration flexibility

Improve the system efficiency



1500V_{oc}

Reduce the number of PV cables

Lower system investment costs



2 MPPTs

Increase the possibility of the PV access

Improve the solar power generation efficiency

Parameters	HPS100HV	HPS150HV
Apparent power	110KVA	165KVA
Rated power	100KW	150KW
Rated voltage	400V	400V
Rated current	144A	217A
Voltage range	360-440V	360-440V
Dimension(W/H/D)	1200/1900/800mm	1200/1900/800mm
Weight	948kg	1230kg
Communication	RS485/CAN	RS485/CAN

PV Combiner Box Matching



HV Combiner Box Available

 Point-to-point development



**Appropriate
PV Combiner Box**

Products	Range of ATESS PV Combiner Box	
	8 Strings of Input	16 Strings of Input
HPS30-HPS150	PV-CB8M-P	PV-CB16M-P
HPS100/150HV	PVCB8HV	N/A



ATESS HV Combiner Box for HPS100HV& HPS150HV

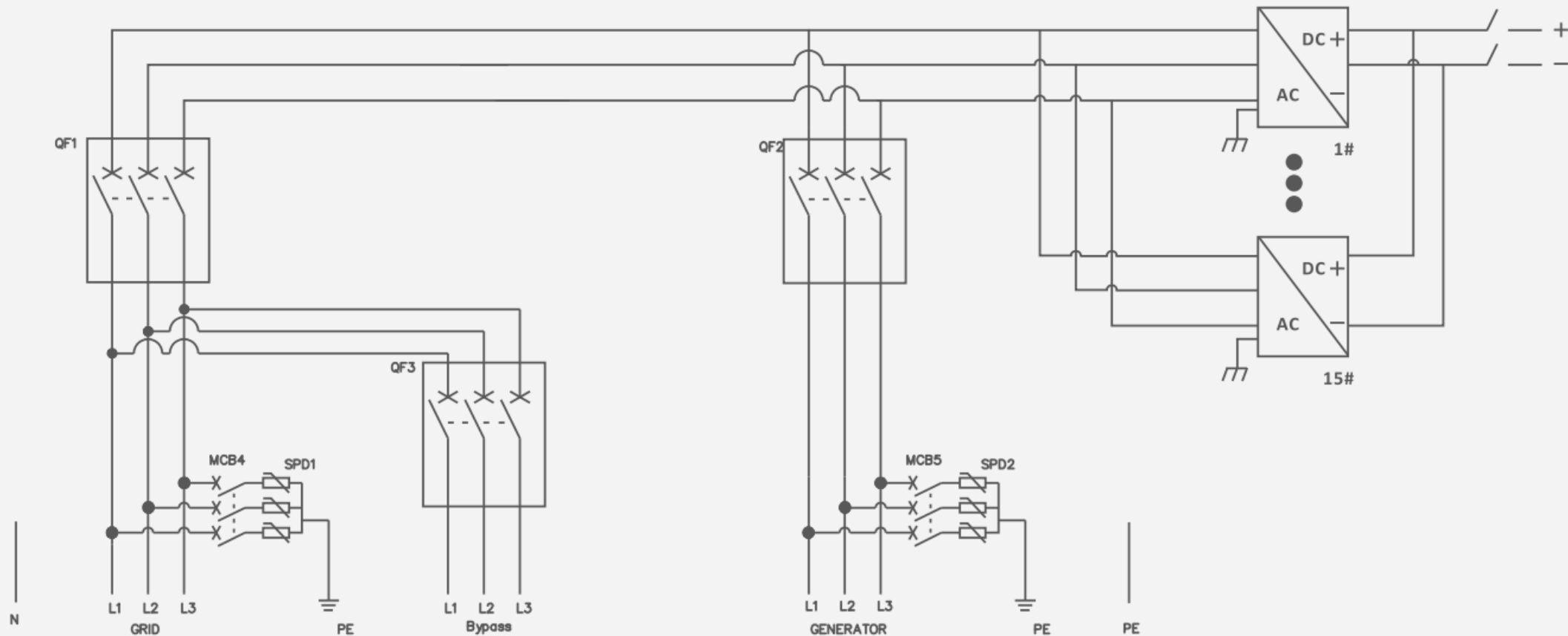


Parameters	PV-CB8HV
Max. input voltage	1500V
Max. string Isc	20A
Number of input string	8
Input fuse	30A
Number of output	1
Max. output current	160A
Dimension (W/H/D)	600/500/187mm
Protection degree	IP65
Mounting	Wall-mount
Communication	RS485



05 | RTF600A Rectifier with ATS

RTF600A Block Diagram



Intergrated RTF600 and ATS630---RTF600A



Two in One design

- Build-in ATS
- Intergrated with manual grid bypass switch
- Cost effective for DC coupling solution
- Save space for container solution

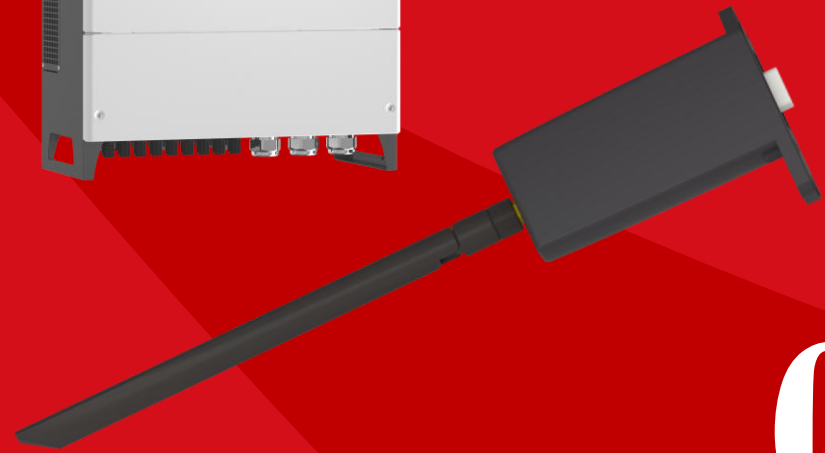


Parameters Comparison

Products	Built in		
	Grid Bypass Switch	ATS function for switching Gird and DG	Size
RTF600	No	No	1204/1958/853mm
ATS630	Yes	Yes	1602/1903/790mm
RTF600A	Yes	Yes	1204/1958/853mm



- ✓ **Integrated with ATS**
- ✓ **AC to DC single direction for rectifier**
- ✓ **Parallel number is unlimited**
- ✓ **Max 15 modules, up to 600kW**



06 | Multiple Upgrades for Transformless HPS-TL



Multiple Upgrades for HPS15-50KTL& HPS30KTL-US-208



Multiple Upgrades

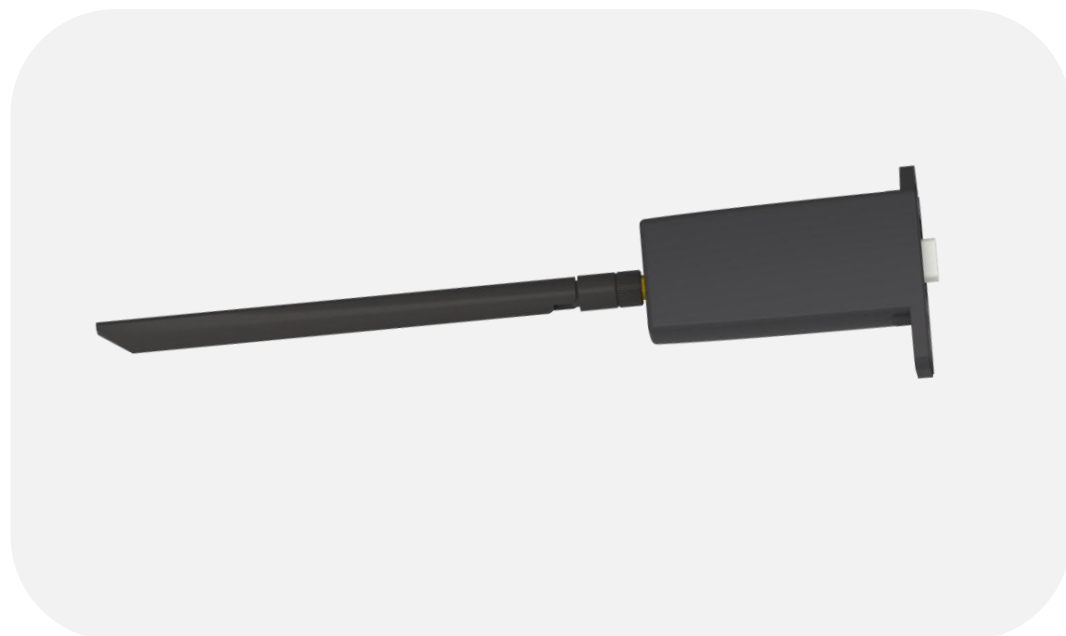
- Intergratged with ATS function
- WIFI or 4G communication module
- Aluminum alloy to reduce weight
- AC input power increased
- PV inverters Function





Parameters Comparison

Products P/N	Max PV Power		AC input Power		ATS Intergrated	WIFI&4G	Weight		IP Degree
	CV	NV	CV	NV			CV	NV	
HPS15000TL	23kWp	23kWp	15kW	30kW	✓	✓	45KG	45KG	IP54
HPS20000TL	30kWp	30kWp	20kW	40kW	✓	✓	45KG	45KG	IP54
HPS30000TL	45kWp	45kWp	30kW	50kW	✓	✓	90KG	80KG	IP54
HPS40000TL	60kWp	60kWp	40kW	60kW	✓	✓	90KG	80KG	IP54
HPS50000TL	75kWp	75kWp	50kW	70kW	✓	✓	90KG	80KG	IP54
HPS30000TL-US-208(AFCI build-in)	36kWp	45kWp	30kW	40kW	✓	✓	90KG	< 100KG	IP65

Sticker Logger for HPS15-50KTL



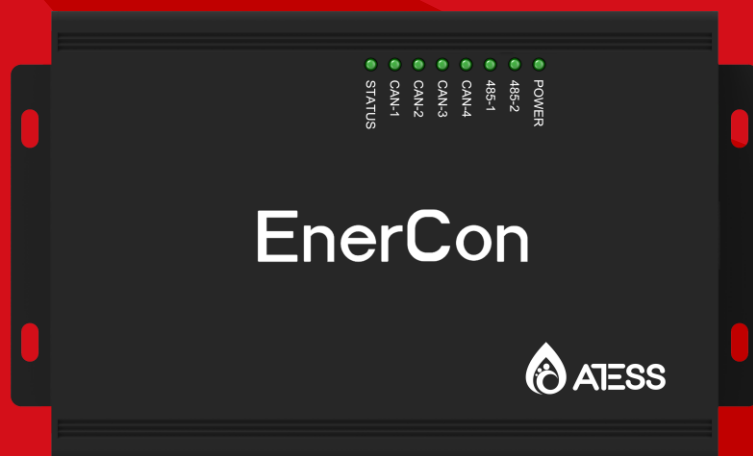
Wireless design

-  Cost effective instead of EnerLog
-  More competitive about transformerless HPS in the market



Parameters Comparison

Products
EnerLog/ShineMaster
Ener4G/Ener4G-US
EnerWIFI



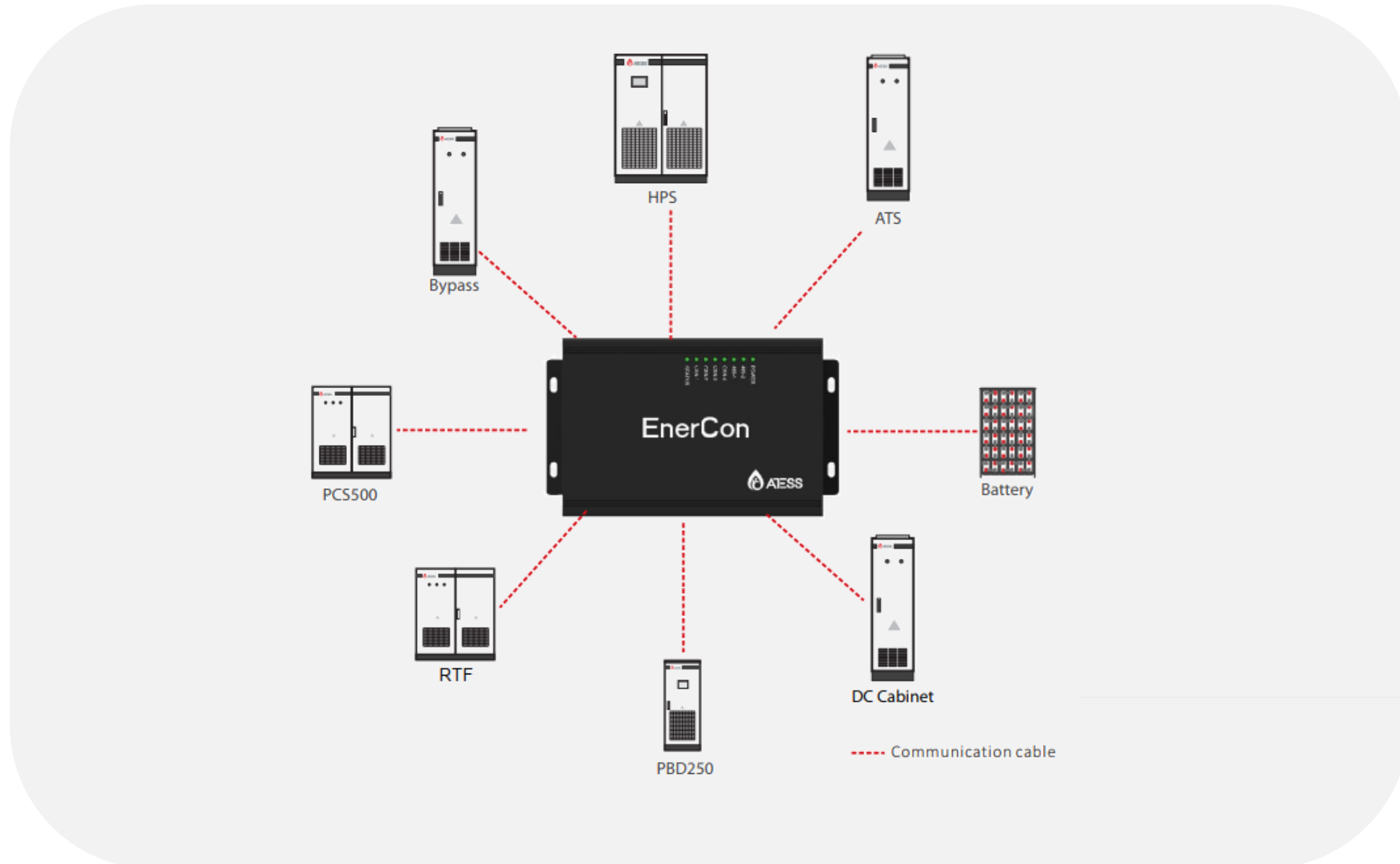
07 | EnerCon



Enercon

- ☞ Reduce the communication cables connections between equipment for parallel HPS/PCS System
- ☞ Speed up the operating capacity of HPS/PCS ESS system
- ☞ Working together with EnerLog

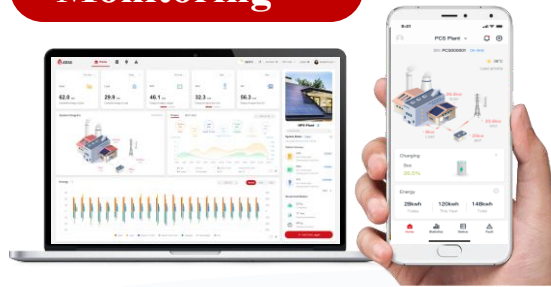
ATESS Enercon for Energy Storage System





08 | Monitoring System and related upgrade

Monitoring



Provide end users with remote management of power plant

Real-time monitoring of system and device data

Receive, parse, store, analyze and process terminal device data

Cloud Service

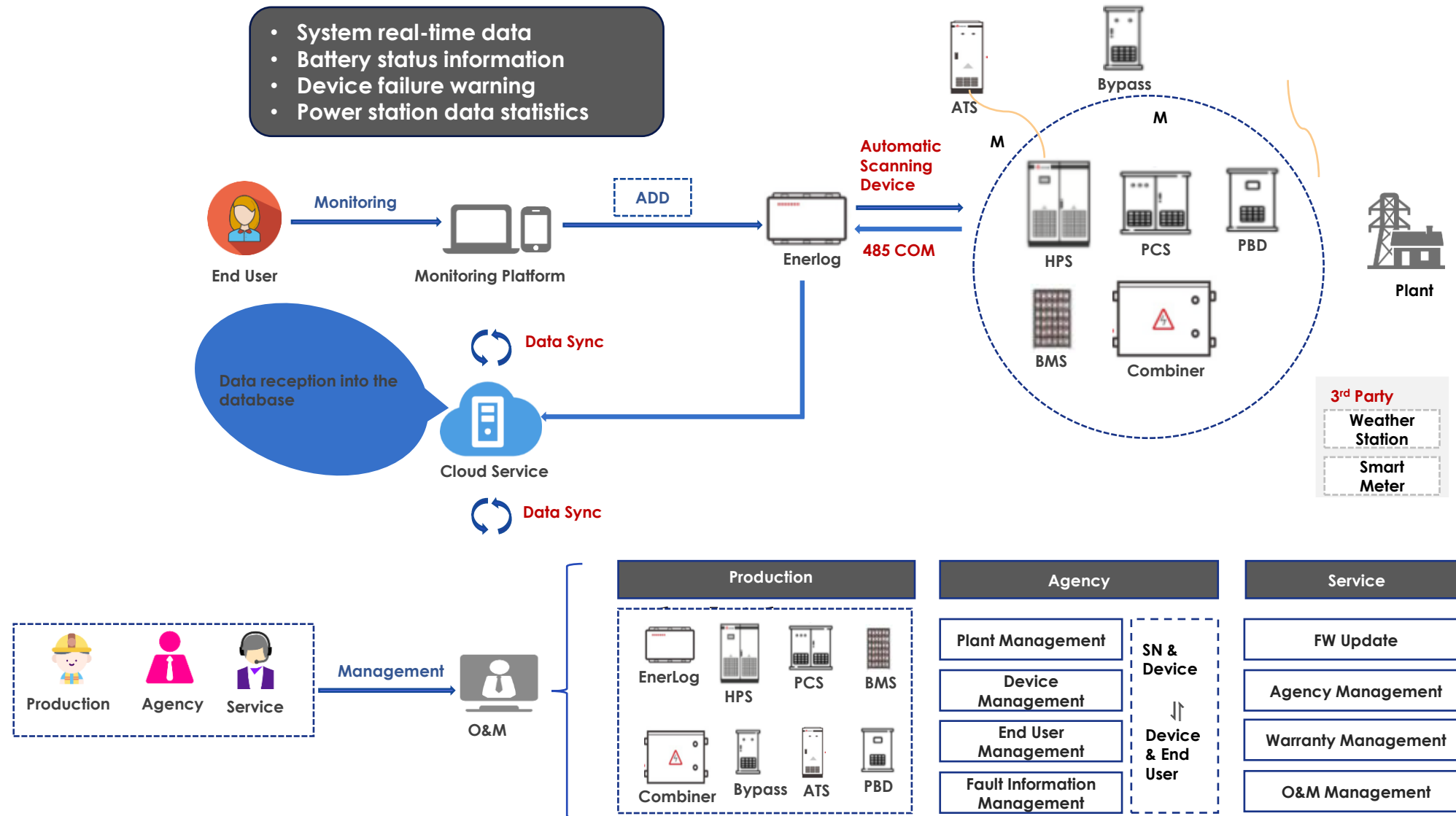


Provide APP/O&M/API

Distributed deployment services based on customer location

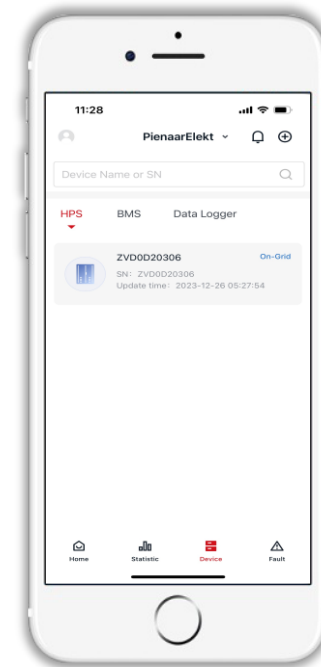
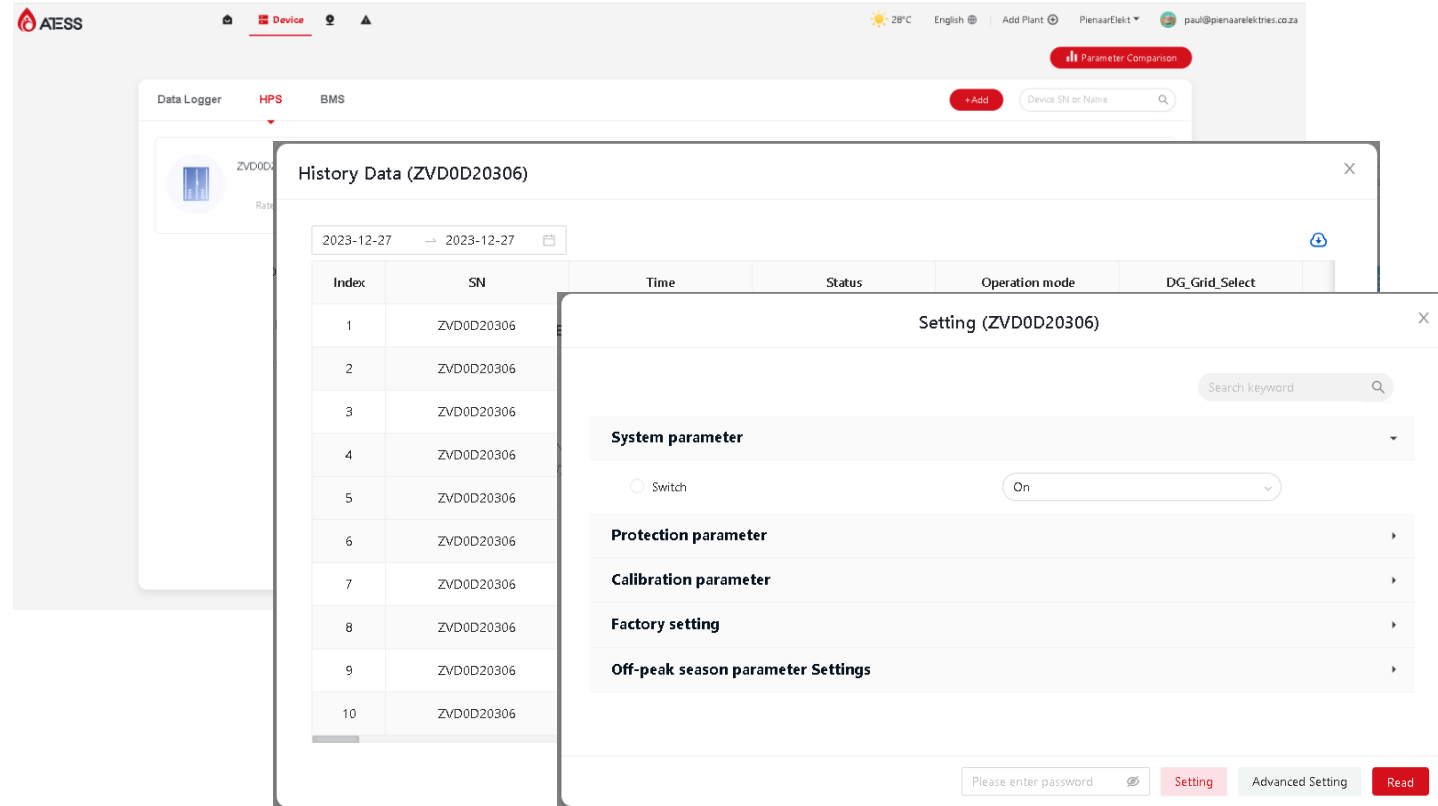
Data security, system stability, and high availability platform

Monitoring System Composition



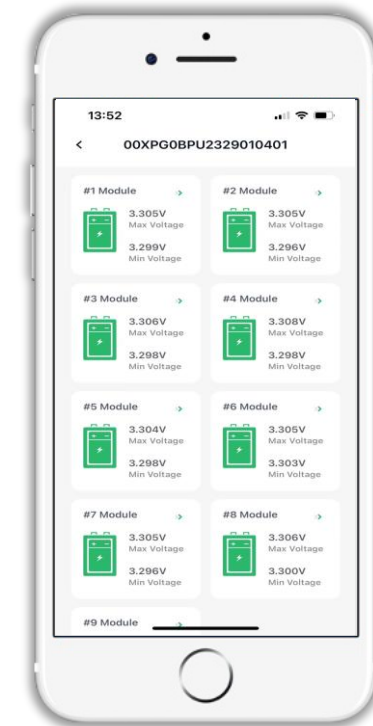
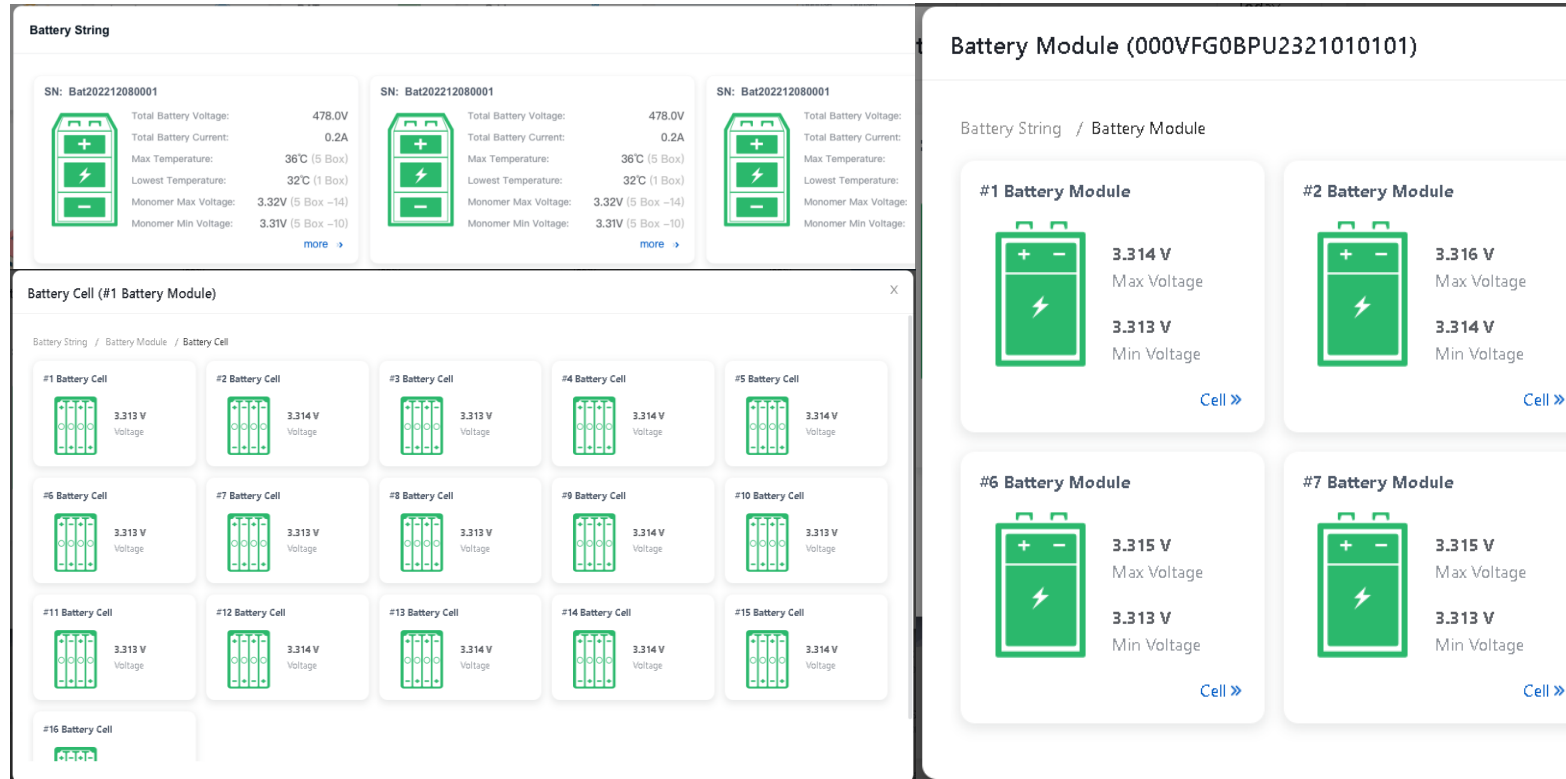
Monitoring Platform





Description:

- Manage all equipment data under the power station and display them classified by type
- Support remote setting parameters and read the latest data of the device
- Device data history query, support downloading and local viewing
- Fault instantaneous data download analysis



Description:

- Battery string: View the total voltage, total current, maximum/minimum temperature and other data of each battery string
- Battery module: View the maximum/minimum voltage data of each module under the battery string
- Battery cell: View the voltage data of each battery cell under the module

- It mainly provides remote monitoring and management of power station device services for end users, allowing users to monitor device operation, fault and other data in real time.
- There are two platforms: PC (Enerclo) and APP (Enerview Pro).

PC access address: <https://www.enerclo-atesspower.com/>



APP for IOS



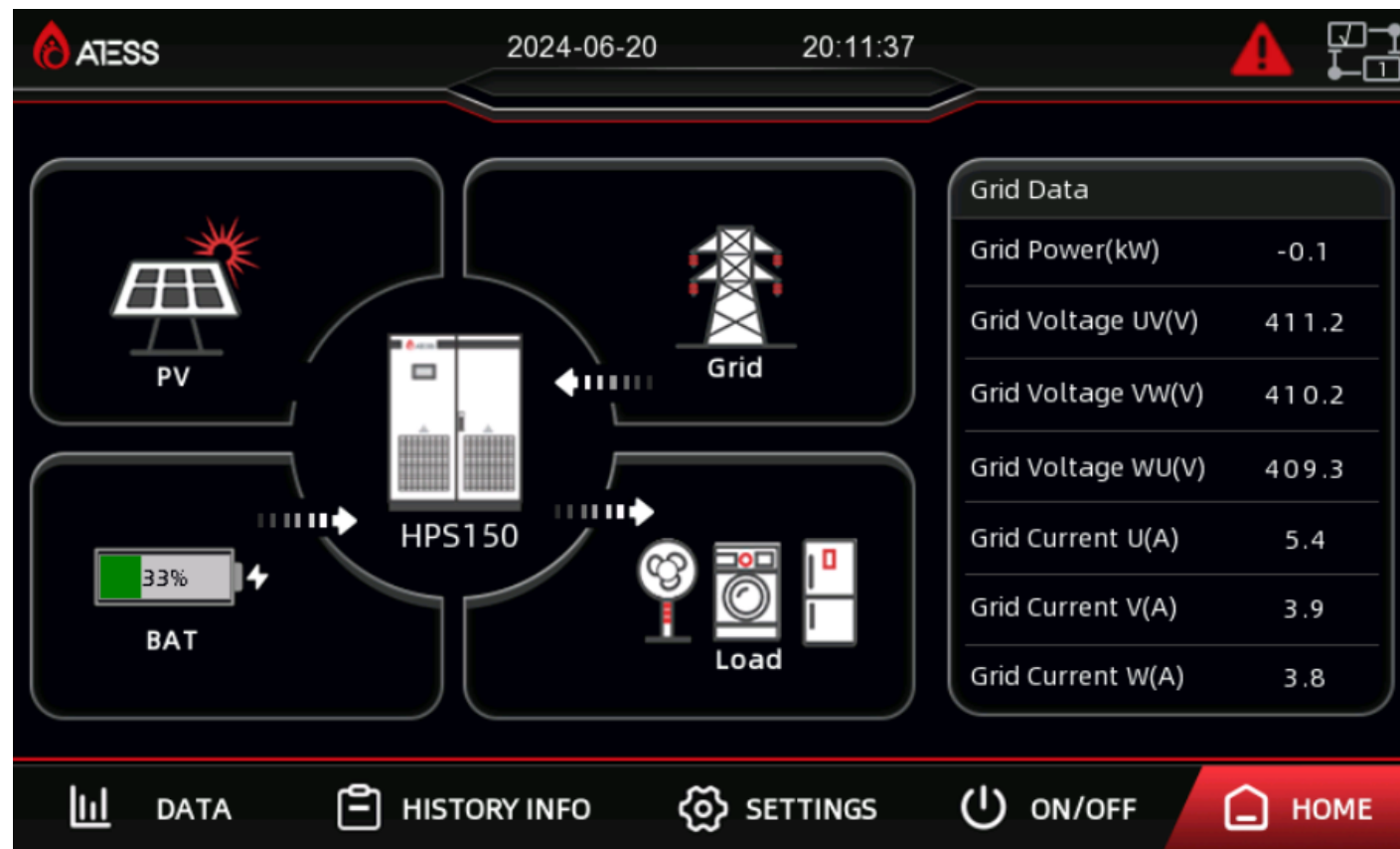
APP for Android

New UI Interface of HPS/PCS Screen



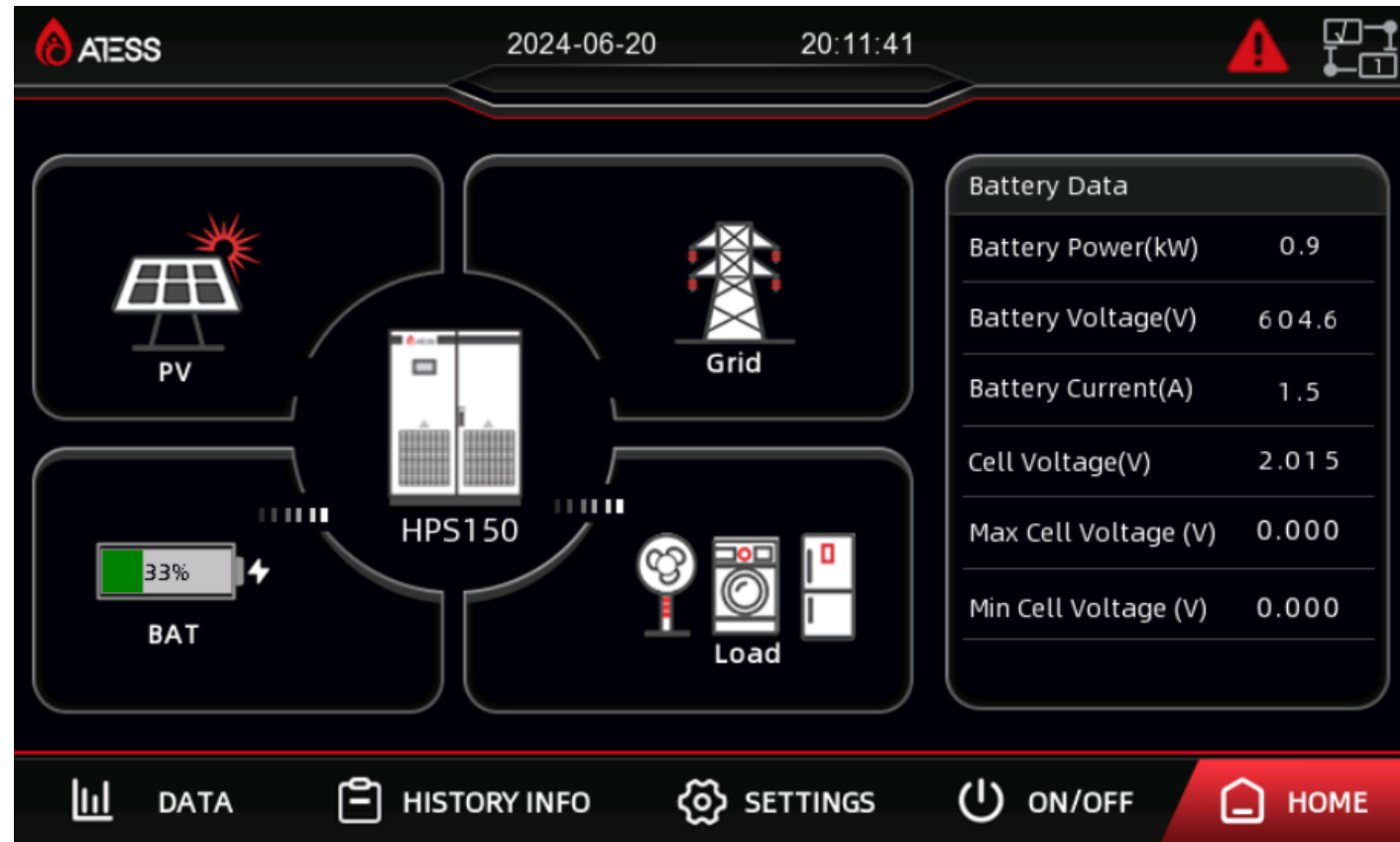
 More Concise Design & Higher Resolution to provide a new experience

New UI Interface of HPS/PCS Screen



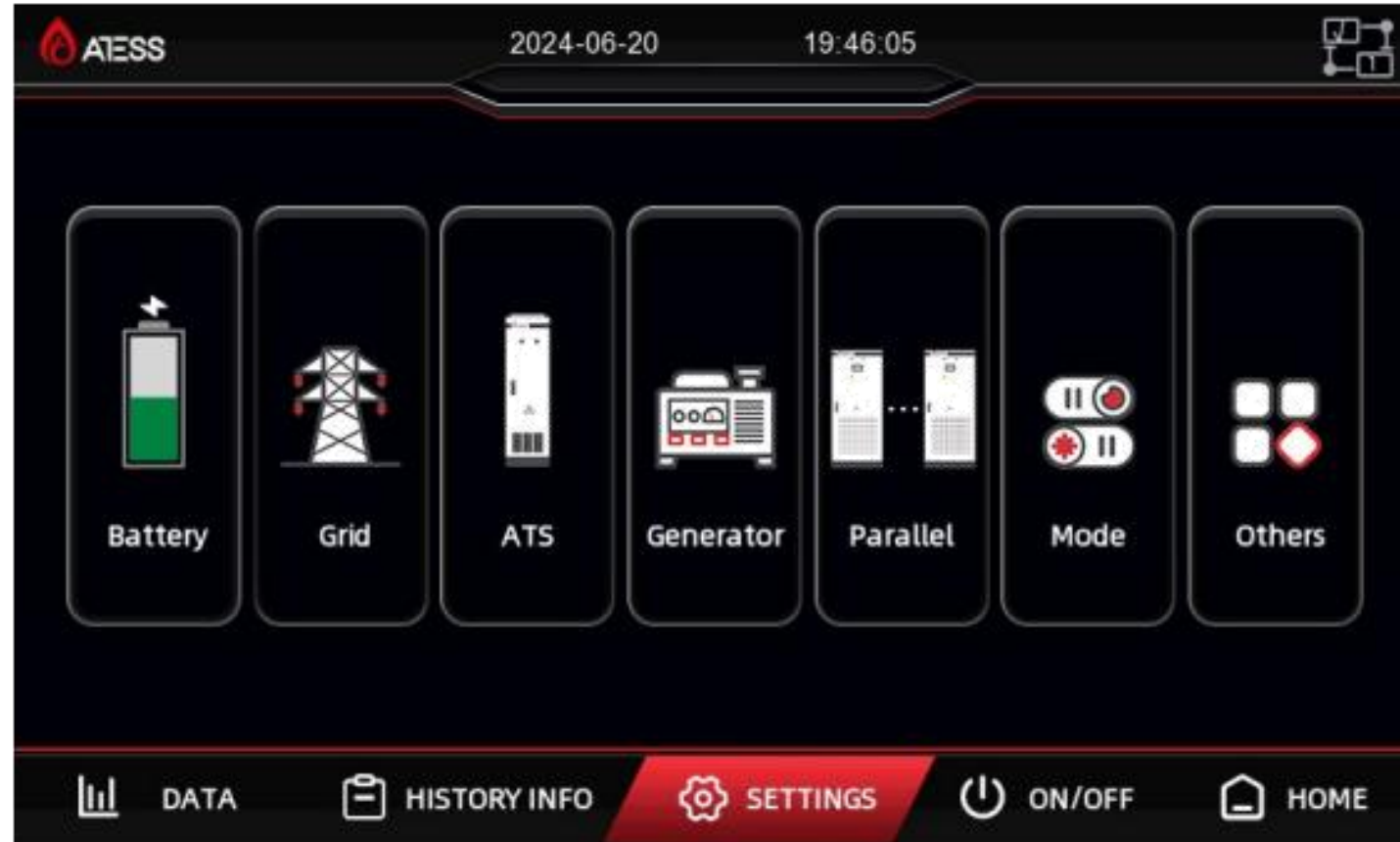
More Concise Design & Higher Resolution to provide a new experience

New UI Interface of HPS/PCS Screen



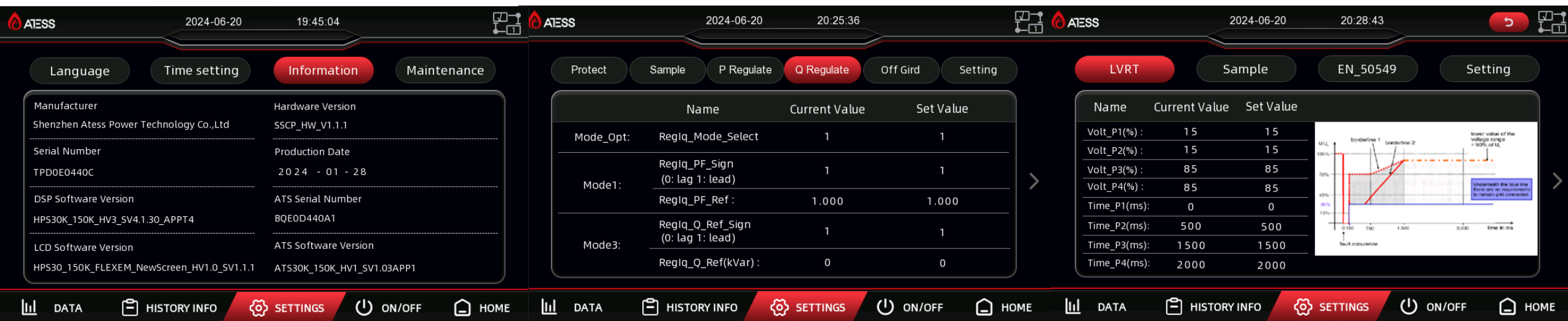
 More Concise Design & Higher Resolution to provide a new experience

New UI Interface of HPS/PCS Screen



 More Concise Design & Higher Resolution to provide a new experience

New UI Interface of HPS/PCS Screen



More Concise Design & Higher Resolution to provide a new experience



Technical Breakthrough: Number of Parallel Units



Products	Parallel Number
PCS100-1000	8 Units
HPS30-150	8 Units
HPS15-50KTL	10 Units
PCS1000-1500HV	8 Units
HPS100HV/HPS150HV	8 Units
PCS250S-350S	8 Units

Products	Launched Time
PCS100-630	NRS097-2-1: 2024
HPS30-150	NRS097-2-1: 2024
HPS15-50KTL	NRS097-2-1: 2024
PCS1000	Grid Connection Code for RPPs in South Africa

2025

Thanks

A T E S ... S